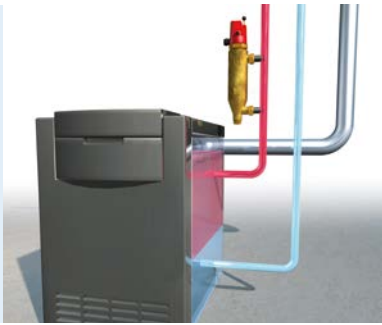


Boiler water low level alarm WMS-WP6 – mechanical



- For protection of the boiler when the water level is too low
- TÜV-tested as a water level switch.
- Direct mounting via welding socket or connection thread
- With test button for function check



Application For sealed heating systems to protect the boiler as per EN 12828 in the case of low water levels.

Description Mechanical boiler water low level alarm with float. Consisting of a cast brass body with welding sockets and a float mechanism, an electrical switch, test and unlock buttons. TÜV-tested as a water level switch. If the water level in the boiler drops below a minimum level, a float activates a switch. The power supply to the boiler is interrupted. A locking mechanism keeps the burner from switching back on automatically. The test button allows the float to be lowered to simulate a low water alarm condition.

Version WMS-WP6-R2 with male connection thread R2 for direct installation in the boiler.

Technical specifications

Operating temperature range

Medium: Max. 120 °C
Ambient: Max. 120 °C

Housing

Cast brass
Height: 358 mm
Degree of protection IP 54 (EN 60529)

Float

Plastic

Connection

Welding socket DN 20
or male thread R2

Operating pressure

Max. 10 bar

Test pressure

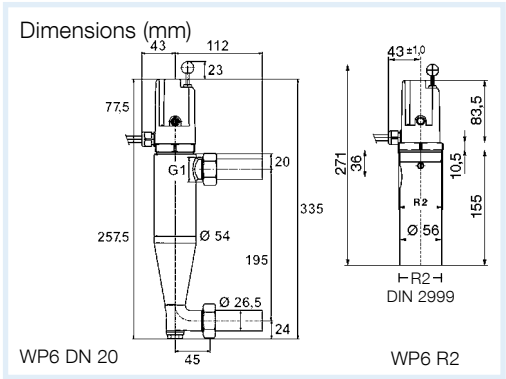
15 bar

Contact rating

AC 250 V, 6 (2) A

Type approval mark

TÜV.HWB.15-232



According to EN 12828, sealed heating systems with capacities of more than 300 kW must be equipped with a TÜV-tested boiler water low level alarm.

DG: G, PG: 2			Part no.	Price €
WMS-WP6 with welding socket DN 20	1	15	42300	
WMS-WP6 without locking, with welding socket DN 20	1	15	42305	
WMS-WP6-R2 with connection thread R2 male	1	-	42319	
Spare parts				
Upper part WMS-WP6 with locking	1	-	42310	
Upper part WMS-WP6 without locking	1	-	42311	
Probe body for WMS-WP6 DN 20	1	-	42368	